

MANUEL PARDO

EXCLUSIVE AND LIMITED EDITIONS PRE ORDER

In Manuel Pardo, we embrace *Eco-sustainability* by crafting all our garments exclusively made just for you. These pieces are part of *Limited Editions*, they are exclusive Limited Edition, with a limited stock of high-quality natural fabrics and materials. Each garment is unique and numbered, accompanied by an authenticity card from the brand.

Our garments are handmade using manual tailoring techniques and impeccable *English Draping*. We use interlinings with body or more rigid to ensure the suit remains wrinkle-free.

When you shop at our online atelier, you'll have access to our stylist via phone call or video conference. The stylist will advise you on finding the perfect look for your special event and will request that you fill out a measurement form, which you can print for added convenience. This process is simple and allows us to advise you on the correct size and address any questions, ensuring that your shopping experience is as if you were at our Atelier in Barcelona.

MANUEL PARDO

STEPS FOR THE PURCHASE OF A SUIT

- 1 Explore our online boutique to discover our exclusive designs and looks. To provide you with a personalized shopping experience, we recommend scheduling and appointment with our online stylist.
- 2 Download the PDF guide explaining how to take measurements to determine your size. Follow the simple steps.
Send these measurements to your stylist via WhatsApp Customer Service 0034 617 771 511, along with your personal details including Name and Surname, in centimeters or inches. We will confirm the correct size, based on the measurements you provide, and you will be able to complete the purchase process.
If you don't have all the necessary garments for measuring, such as the waistcoat, please send all shirt and pants measurements, and the measurements of the body, which we indicate.
All this process ensures the right sizes. Note that the only item with adjustment room is the pants, which can be widened for an additional size.
- 3 After placing your order and completing the purchase, the estimated delivery time is 1 and a half business months or two natural months from the order confirmation + shipping days that vary depending on the country (please refer to the chart in the FAQs to determine delivery days by country).
In the case of shoes, the shipping time is 2-3 weeks. If we have stock available, the time would be one week. It is advisable to consult with the stylist to confirm availability.

MANUEL PARDO

HOW TO KNOW YOUR SIZE

GARMENTS SIZE

1 First step

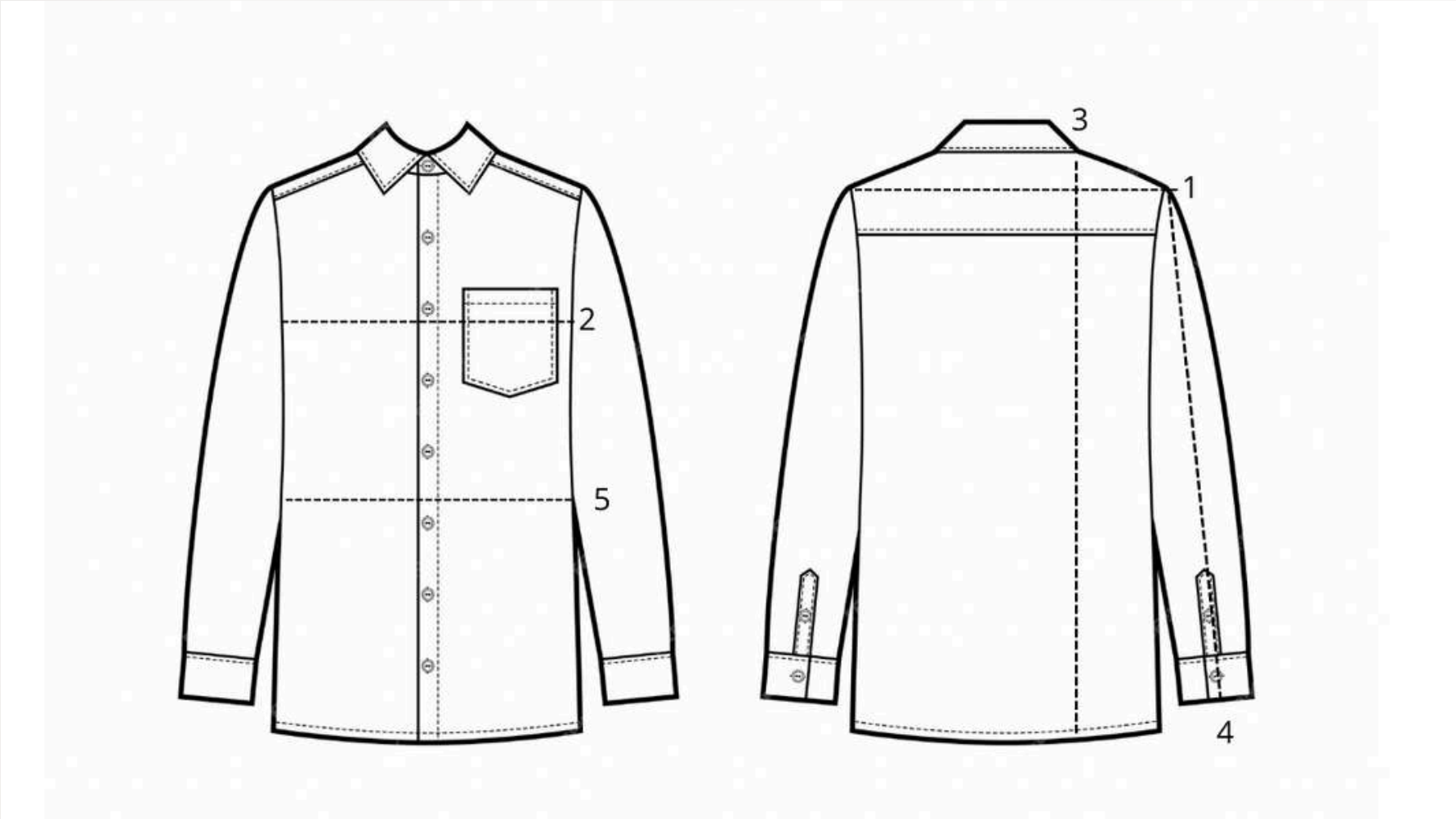
Place a garment that is your size and fits correctly (shirt, trousers, waistcoat, jacket) on a flat surface (for example, a table) **BUTTONED AND STRETCHED**. Ensure that the garments are not sportswear or jeans, and don't contain lycra or elastane.

MANUEL PARDO

HOW TO KNOW YOUR SIZE

SHIRT

- Shoulder, number 1
- Chest, number 2
- Shirt length, number 3
- Sleeves length, number 4
- Waist, number 5



ADULTS

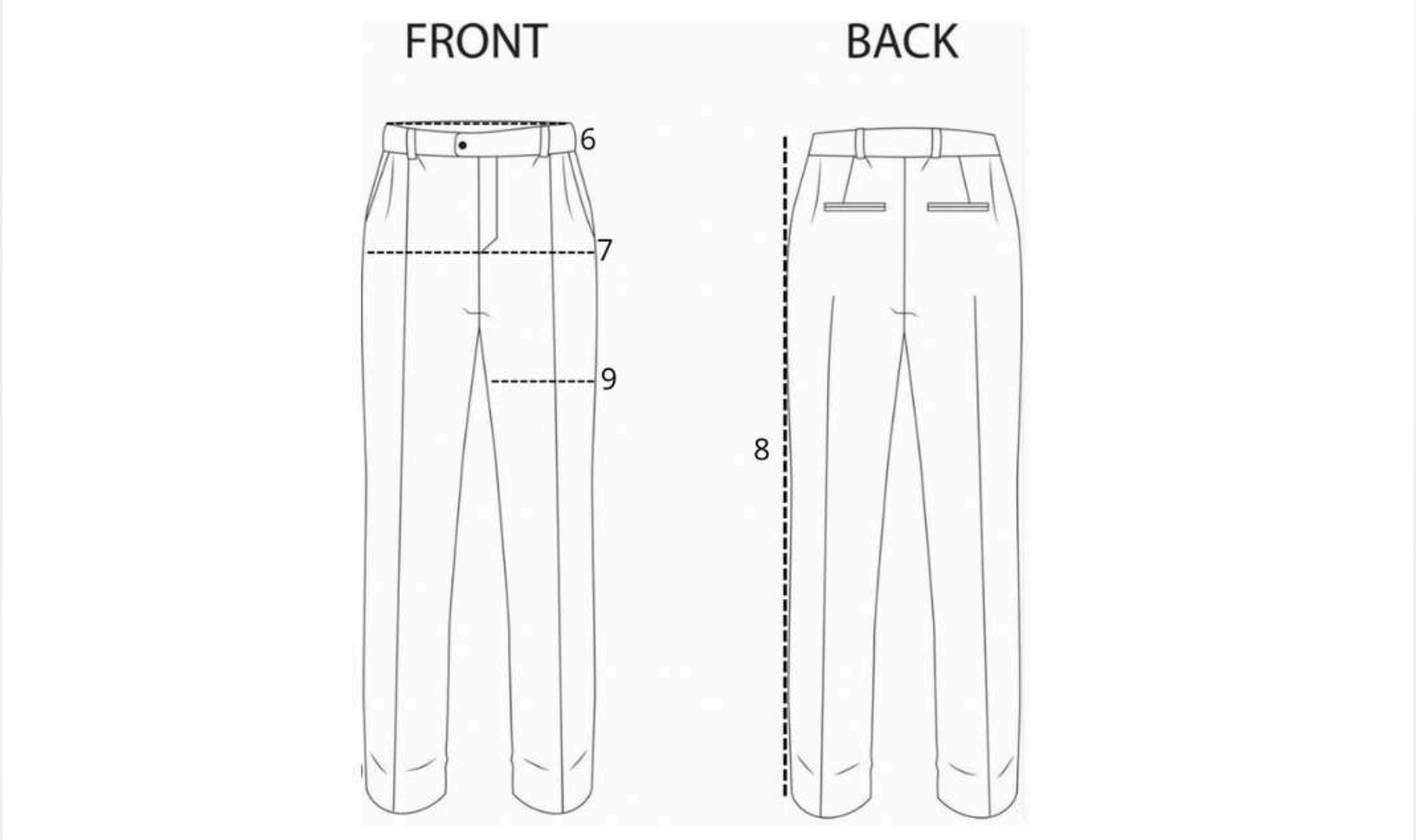
MANUEL PARDO SIZES - EUROPE	XS	S	M	L	XL	2XL	3XL	4XL
UK - USA	36	38	40	42	44	46	48	50

MANUEL PARDO

HOW TO KNOW YOUR SIZE

TROUSERS

- Waist, number 6
- Hips, number 7
- Outside leg, number 3
- Thigh, number 9



ADULTS

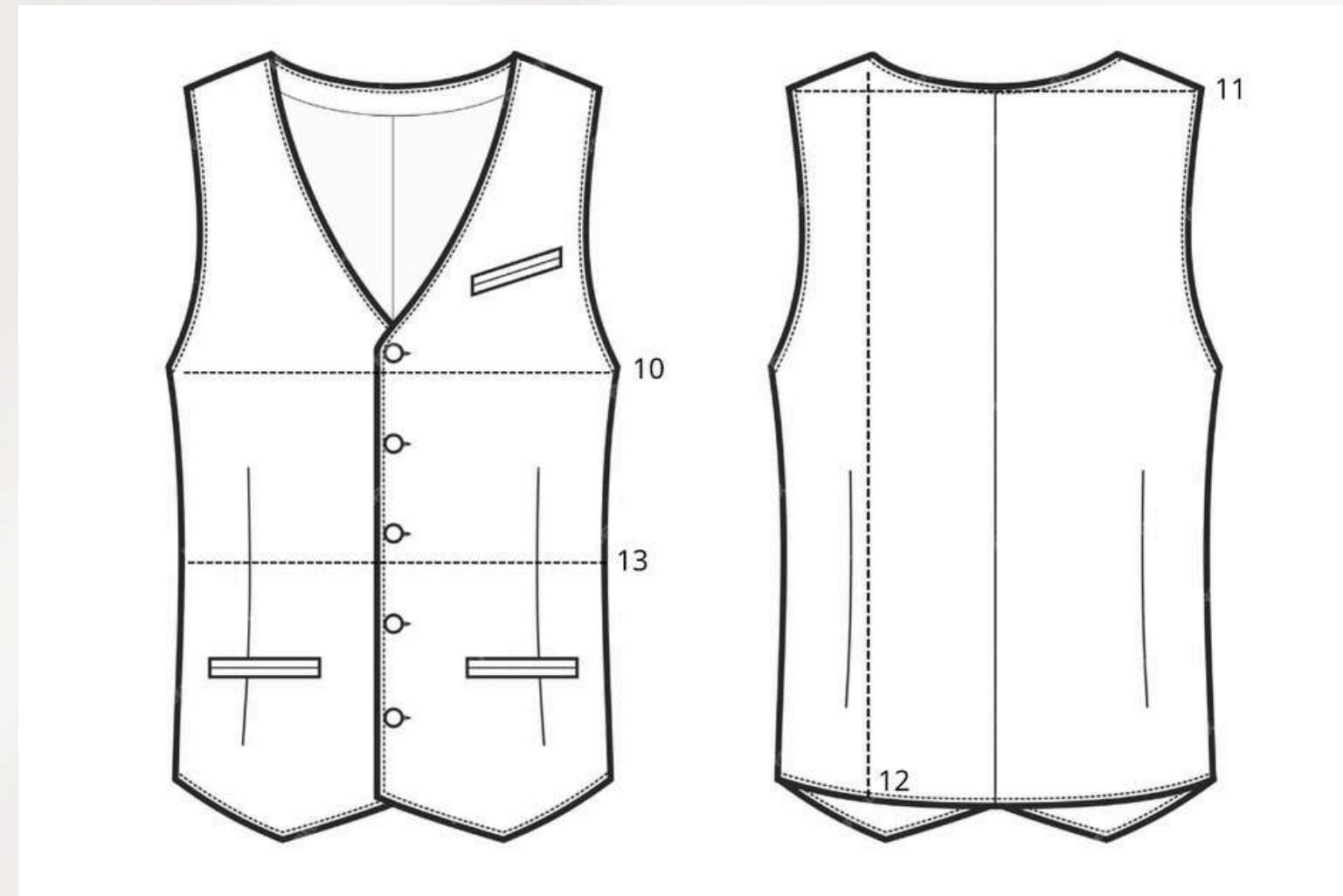
MANUEL PARDO SIZES - EUROPE	38	40	42	44	46	48	50	52	54	56
UK - USA	28	30	32	34	36	38	40	42	44	46

MANUEL PARDO

HOW TO KNOW YOUR SIZE

WAISTCOAT

- Chest, number 10
- Shoulders, number 11
- Waistcoat length, number 12
- Waist, number 13



ADULTS

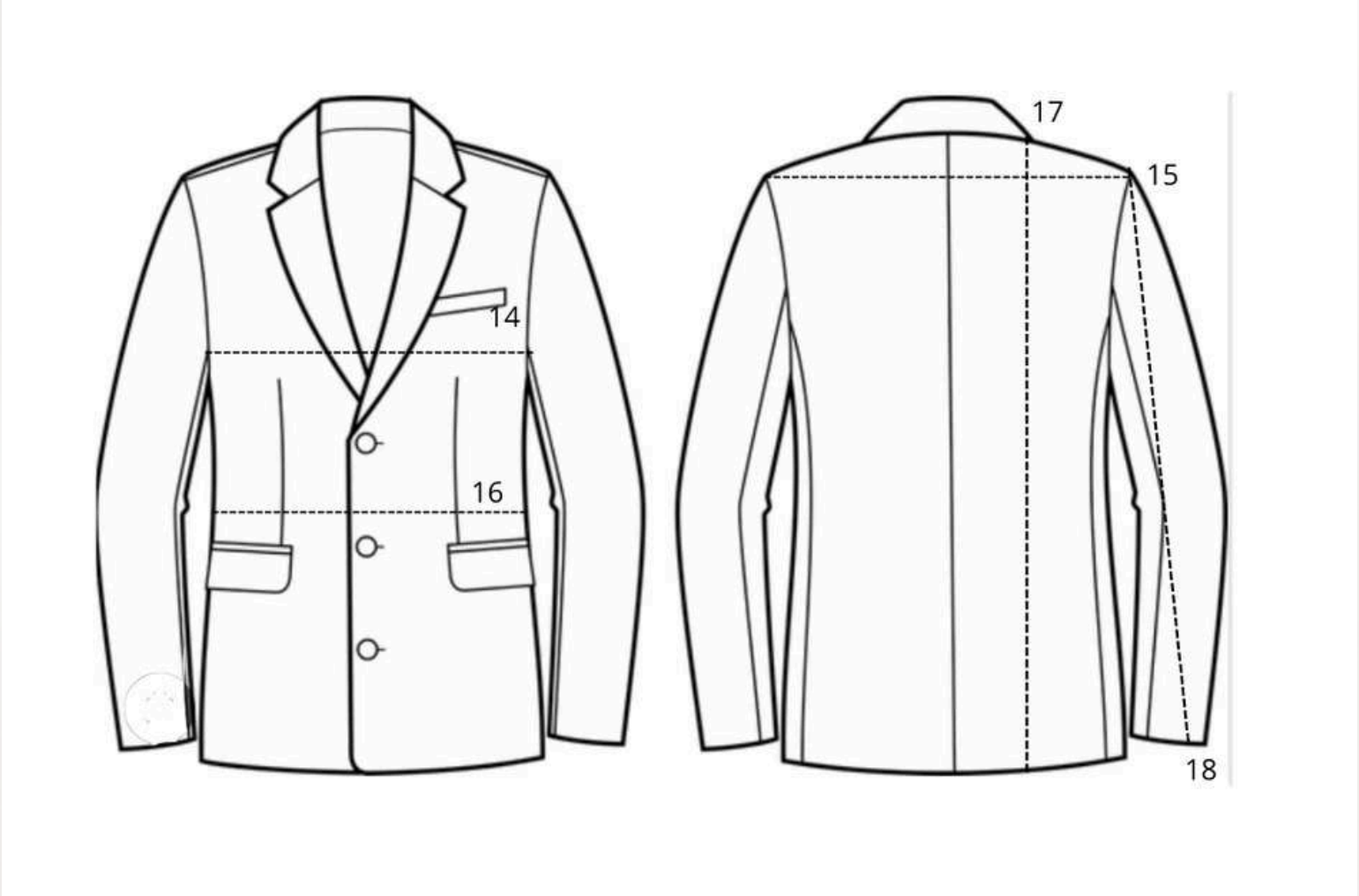
MANUEL PARDO SIZES - EUROPE	XS	S	M	L	XL	2XL
UK - USA	36	38	40	42	44-46	48-50

MANUEL PARDO

HOW TO KNOW YOUR SIZE

JACKET

- Chest, number 14
- Shoulders, number 15
- Waist, number 16
- Jacket length, number 17
- Sleeves length, number 18



ADULTS

MANUEL PARDO SIZES - EUROPE	48	50	52	54	56	58	60	62
UK - USA	38	40	42	44	46	48	50	52

MANUEL PARDO

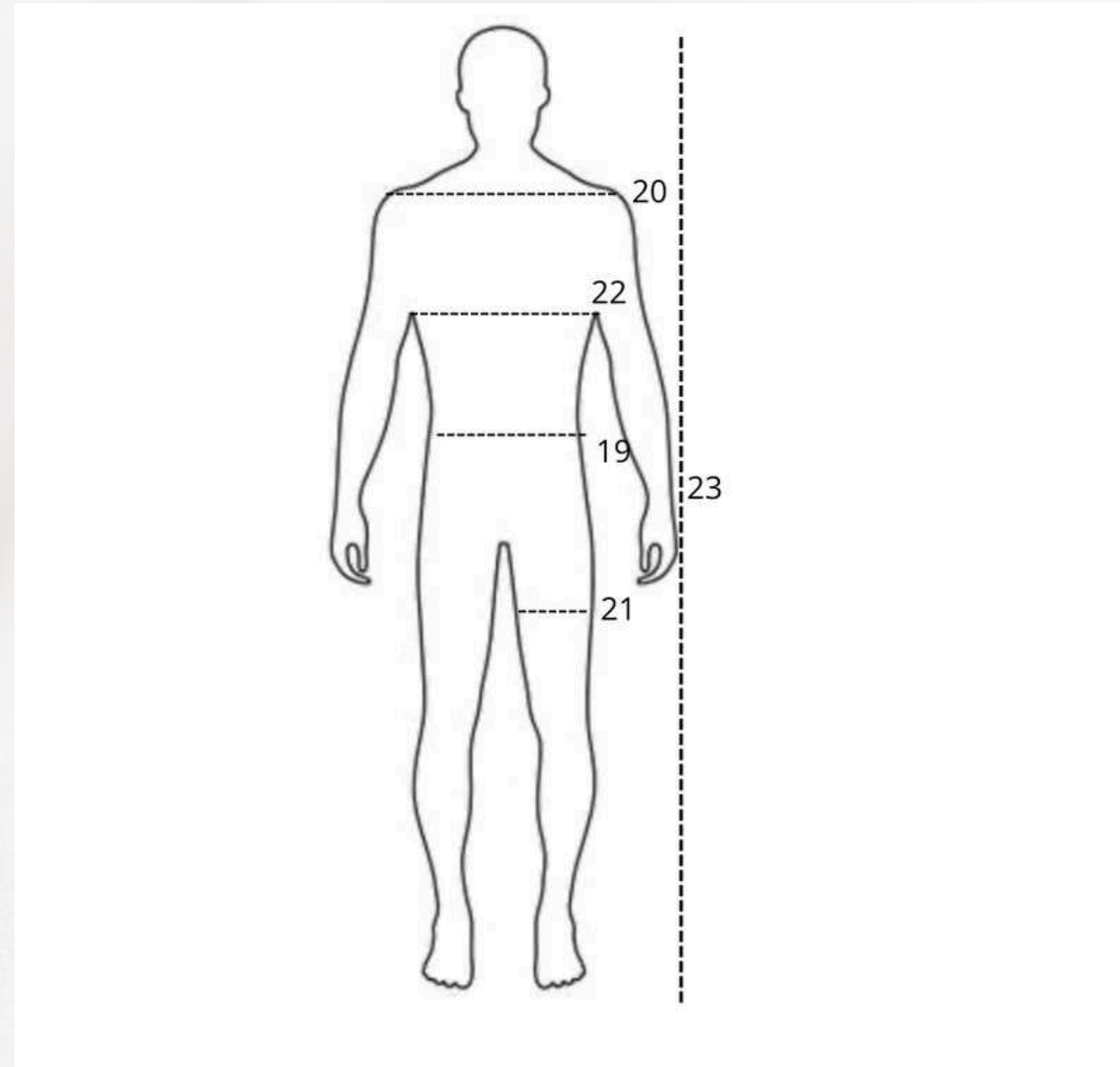
HOW TO KNOW YOUR SIZE

MEASUREMENTS ON BODY

2 Second step

Take these measurements on your body:

- Belly circumference, number 19
- Thigh circumference, number 20
- Chest circumference, number 21
- Your height, number 23

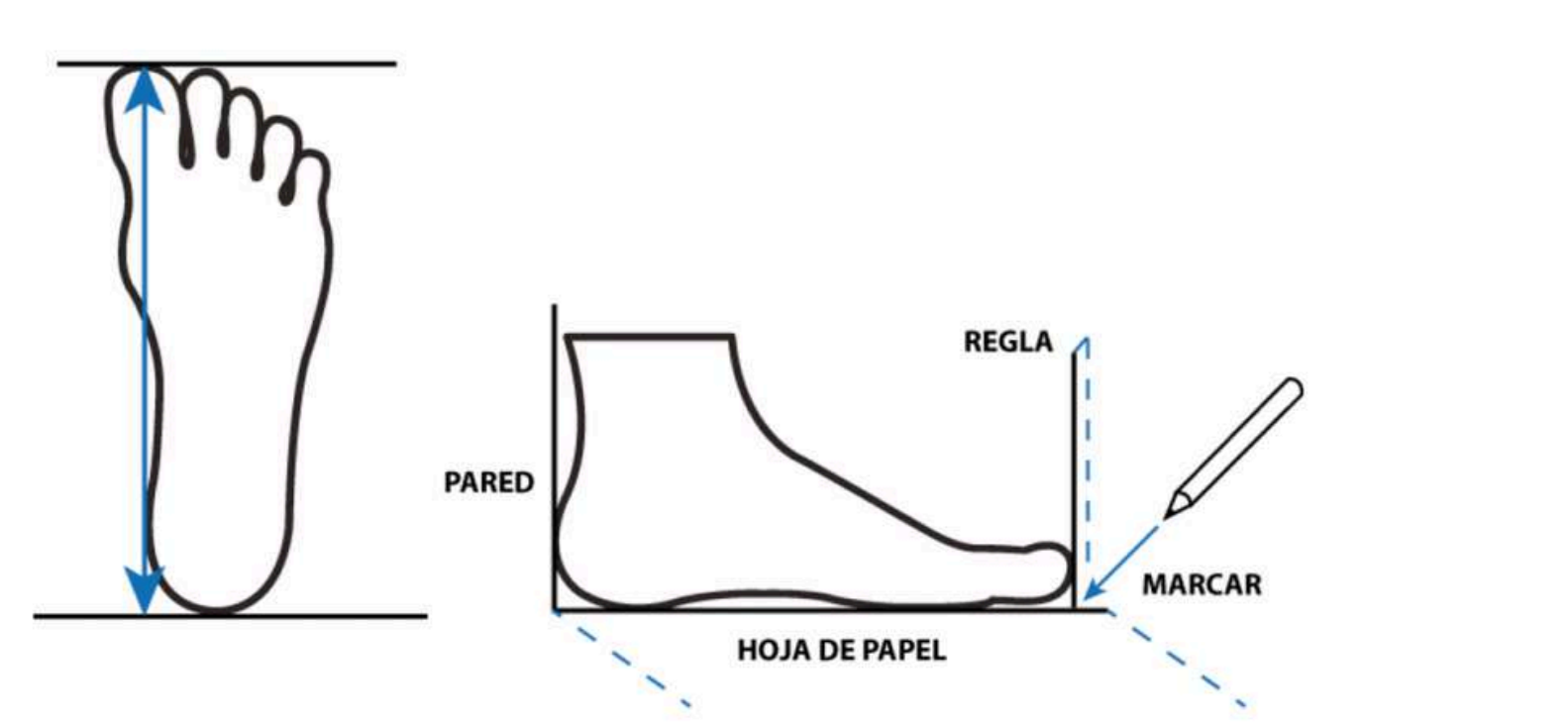


MANUEL PARDO

HOW TO KNOW YOUR SIZE

SHOE SIZE

Place your foot on a white paper, trace around the outline of your foot, and measure the entire length from the longest points, it means, from the toe to heel.



ADULTS

MANUEL PARDO SIZES - EUROPE	39	40	41	42	43	44	45	46	47	48
UK - USA	7	8	9	10	11	12	13	14	15	16
CM	26,1	26,7	27,4	28	28,5	29,2	29,8	30,5	31,2	32,1
INCH	10,27	10,51	10,78	11,02	11,22	11,49	11,73	12	12,28	12,63

GARMENTS SIZE - KID

MANUEL PARDO SIZES - EUROPE	2	4	6	8	9	10	12	14
USA	2-3T	4-5T	6T	S7-8	S9	S10-11	M12	M13-14
AGES	2-3 YEARS	4-5 YEARS	6 YEARS	7-8 YEARS	9 YEARS	10-11 YEARS	12 YEARS	13-14 YEARS

SHOE SIZES - KID

MANUEL PARDO SIZES - EUROPE	33	34	35	36	37	38	39
USA / UK	1	2	3	4	5	6	7
CM	21	22	23	23,5	24	25	26
INCH	8,27	8,66	9,06	9,25	9,45	9,84	-